

Professional Identity in Nursing: Virtual Forum 2020

September 9-10, 2020



International Society for
Professional Identity in Nursing
Advisory Council



Nelda Godfrey, PhD, ACNS-BC, FAAN, ANEF
Professor and Associate Dean
Innovative Partnerships and Practice
University of Kansas School of Nursing
Advisory Council Chair



Kristi Frisbee, DNP, RN
Associate Professor Pittsburg State University
School of Nursing



Janice G. Brewington, PhD, RN, FAAN
Chief Program Officer and Director for the Center for
Transformational Leadership
National League for Nursing



Caryl Goodyear, PhD, RN, NEA-BC, CCRN-K, FAAN
Practice Excellence Programs Manager
American Association of Critical-Care Nurses
Independence, Missouri



**Cole Edmonson, DNP, RN, NEA-BC, FACHE,
FAONL, FNAP, FAAN**
Chief Experience and Clinical Officer
AMN Healthcare



Amy L. Hite, DNP, EdS, APRN, FNP
Associate Professor
Pittsburg State University School of Nursing
Nurse Practitioner, Emergency Department
Via Christi Hospital
Pittsburg, Kansas



Judy Hodgson, RN, BSN, NE-BC
Chief Nursing Officer
Hospital District #1 of Rice County, Kansas



Susan Luparell, PhD, RN, CNE, ANEF
Professor
Montana State University
Co-Facilitator of Think Tanks 1 and 2



M. Lindell Joseph, PhD, RN, FAAN
Clinical Professor & Director
Health Systems & Nursing Administration Program
University of Iowa College of Nursing
American Organization for Nursing Leadership (AONL)



Beth Cusatis Phillips, PhD, RN, CNE, CHSE
Associate Professor and Director Institute for
Educational Excellence
Duke University School of Nursing



Debra L. Liebig, MLA, BSN, RN, NPD-BC
Improvement Center
Program Manager
Accreditation & Regulatory Readiness Department
Children's Mercy Kansas City



Kristen Priddy, PhD, RN
Assistant Professor
University of Texas-Arlington



Sheryl Sommer PhD, RN, CNE
Vice President, Chief Nursing Officer
ATI Nursing Education
Leawood, Kansas



Kary Weybrew, WHNP, MSN, RN
Campus Assistant Director
ADN Program
American Career College

Virtual Forum 2020 Presenters



Cynthia Clark, PhD, RN, ANEF, FAAN
Strategic Nursing Advisor:
ATI Nursing Education
Professor Emeritus, Boise State University
Co-Facilitator of Think Tanks 1 and 2



M. Lindell Joseph, PhD, RN, FAAN
Clinical Professor & Director
Health Systems & Nursing Administration Program
University of Iowa College of Nursing
American Organization for Nursing Leadership (AONL)



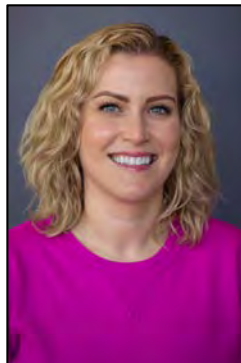
**Cole Edmonson, DNP, RN, NEA-BC, FACHE,
FAONL, FNAP, FAAN**
Chief Experience and Clinical Officer
AMN Healthcare



Lynne Kuhl, MSN, RN
Assistant Professor of Nursing
Viterbo University



Terri Hinkley, EdD, MBA, BScN, RN, CAE
Chief Executive Officer
AMSN



Tullamora Landis, PhD, RN-BC, CNL
Washington State University



Susan Luparell, PhD, RN, CNE, ANEF
Professor
Montana State University
Co-Facilitator of Think Tanks 1 and 2



Kary Weybrew, WHNP, MSN, RN
Campus Assistant Director
ADN Program
American Career College



Rhoda Owens, PhD, RN
Assistant Professor
University of North Dakota
College of Nursing and Professional Disciplines



Beth Cusatis Phillips, PhD, RN, CNE, CHSE
Associate Professor and Director Institute for
Educational Excellence
Duke University School of Nursing

2020-21 Work Group Chairs/Co-Chairs

Competencies and Exemplars



Andrea Gauntlett, MSN, BSN, RN
Assistant Dean, Assistant Professor
School of Nursing

Conceptual Model Development



**Cole Edmonson, DNP, RN, NEA-BC, FACHE,
FAONL, FNAP, FAAN**
Chief Experience and Clinical Officer
AMN Healthcare



M. Lindell Joseph, PhD, RN, FAAN
Clinical Professor & Director
Health Systems & Nursing Administration Program
University of Iowa College of Nursing
American Organization for Nursing Leadership (AONL)

Dissemination



Terri Hinkley, EdD, MBA, BScN, RN, CAE
Chief Executive Officer
AMSN



Kary Weybrew, WHNP, MSN, RN
Campus Assistant Director
ADN Program
American Career College

Demonstration Project - Kansas



Kristi Frisbee, DNP, RN
Associate Professor Pittsburg State University
School of Nursing

Science



Lynne Kuhl, MSN, RN
Assistant Professor of Nursing
Viterbo University



Rhoda Owens, PhD, RN
Assistant Professor
University of North Dakota
College of Nursing and Professional Disciplines

Professional Identity in Nursing Survey



Beth Cusatis Phillips, PhD, RN, CNE, CHSE
Associate Professor and Director Institute for
Educational Excellence
Duke University School of Nursing

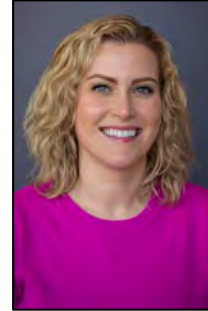


Kristen Priddy, PhD, RN
Assistant Professor
University of Texas-Arlington

Professional Identity in Nursing Research



Cynthia Clark, PhD, RN, ANEF, FAAN
Strategic Nursing Advisor:
ATI Nursing Education
Professor Emeritus, Boise State University
Co-Facilitator of Think Tanks 1 and 2



Tullamora Landis, PhD, RN-BC, CNL
Washington State University



Kristi Frisbee, DNP, RN
Associate Professor Pittsburg State University
School of Nursing



Beth Cusatis Phillips, PhD, RN, CNE, CHSE
Associate Professor and Director Institute for
Educational Excellence
Duke University School of Nursing



Nelda Godfrey, PhD, ACNS-BC, FAAN, ANEF
Professor and Associate Dean
Innovative Partnerships and Practice
University of Kansas School of Nursing
Advisory Council Chair



Kristen Priddy, PhD, RN
Assistant Professor
University of Texas-Arlington